



 PRODUCT-DETAILS

SH203-C20

Miniature Circuit Breaker - SH200 - 3P - 20 A - C



General Information

Extended Product Type	SH203-C20
Product ID	2CDS213001R0204
EAN	4016779631358
Catalog Description	Miniature Circuit Breaker - SH200 - 3P - 20 A - C

Long Description	<p>Compact Home SH200 miniature circuit breakers are current limiting. They have two different tripping mechanisms, the delayed thermal tripping mechanism for overload protection and the electromechanic tripping mechanism for short circuit protection.</p> <p>They are available in different characteristics (B,C), configurations (1P,1P+N,2P,3P,3P+N,4P), breaking capacities (up to 6 kA at 230/400 V AC) and rated currents (up to 40 A). All MCBs of the product range SH200 comply with IEC/EN 60898-1, allowing the use for residential applications.</p>
------------------	------------------------------------------------------------------------------------------------------------------------------------------------------------------------------------------------------------------------------------------------------------------------------------------------------------------------------------------------------------------------------------------------------------------------------------------------------------------------------------------------------------------------------------------------------------------------

ABB EcoSolutions

Environmental Product Declaration - EPD	9AKK108468A1580
	9AKK108468A8288

Technical

Standards	IEC/EN 60898-1
Tripping Characteristic	C
Rated Operational Voltage	acc. to IEC 60898-1 400 V
Operational Voltage	Maximum (Incl. Tolerance) 440 V AC Minimum 12 V AC
Rated Insulation Voltage (U _i)	acc. to IEC/EN 60664-1 440 V
Rated Impulse Withstand Voltage (U _{imp})	4 kV at 2000 m 5 kV at Sea Level 6.2 kV
Dielectric Test Voltage	50/60 Hz-1 min: 2 kV
Input Voltage Type	AC
Rated Current (I _n)	20 A
Rated Short-Circuit Capacity	(AC) 6 kA (400 V AC) 6 kA
Rated Conditional Short-Circuit Current (I _{nc})	(230 V) 6 kA (400 V) 6 kA
Rated Frequency (f)	50 / 60 Hz
Power Loss	7.5 W at Rated Operating Conditions per Pole 2.5 W
Power Supply Connection	Arbitrary
Contact Position Indication	ON / OFF
Energy Limiting Class	3
Electrical Endurance	20000 AC cycle
Mechanical Endurance	20000 cycle
Number of Protected Poles	3
Number of Poles	3P
Overvoltage Category	III
Tightening Torque	2 N·m
Actuator Type	Toggle
Screw Terminal Type	Cage Terminal
Actuator Marking	I / O
Actuator Material	Insulation Group II, Black, Sealable
Housing Material	Insulation Group II, RAL 7035
Mounting on DIN Rail	TH35-15 (35 x 15 mm Mounting Rail) acc. to IEC 60715 TH35-7.5 (35 x 7.5 mm Mounting Rail) acc. to IEC 60715
Mounting Position	any
Recommended Screw Driver	Pozidriv 2
Accessories Available	No
Connecting Capacity	Conductor 25 / 25 mm ² Flexible with Ferrule 0.75 ... 16 mm ² Flexible 0.75 ... 16 mm ² Rigid 0.75 ... 25 mm ² Stranded 0.75 ... 25 mm ²
Installation Size	acc. to DIN 43880 1
Terminal Type	Screw Terminals

Material Compliance

RoHS Information	2CDK400030D0201
RoHS Status	Following EU Directive 2011/65/EU and Amendment 2015/863 July 22, 2019
RoHS Date	0335
REACH Declaration	9AKK107492A1906

REACH Information	True - contains substances > 0.1 mass percentage
REACH Date	20240821
Conflict Minerals Reporting Template (CMRT)	9AKK108468A3363

Environmental

Ambient Air Temperature	Operation -25 ... +55 °C Storage -40 ... +70 °C
Reference Ambient Air Temperature	30 °C
Degree of Protection	IP20 Enclosure with Cover IP40
Pollution Degree	2
Environmental Conditions	28 cycles with 55 °C / 90-96 % and 25 °C / 95-100 %
Resistance to Vibrations	20 Cycles with Load 0.8 In: 5g 5 ... 150 ... 5 Hz
Resistance to Shock acc. to IEC 60068-2-27	25g 2 shocks 13 ms
Environmental Information	2CDK400030D0201

Dimensions

Width in Number of Modular Spacings	3.0
Product Net Width	52.5 mm
Product Net Height	85 mm
Product Net Depth / Length	69 mm
Product Net Weight	0.375 kg
Pole Net Weight	0.125 kg
Built-In Depth (t ₂)	69 mm

Ordering

Package Level 1 Units	carton 1 piece
Package Level 1 Gross Weight	0.39 kg
E-Number (Finland)	3210170

Certificates and Declarations

Declaration of Conformity - CE	2CDK400607D2703
Certification Agency	EN IEC

Installation

Instructions and Manuals	2CDS207105P0001
--------------------------	-----------------

Popular Downloads

Data Sheet, Technical Information

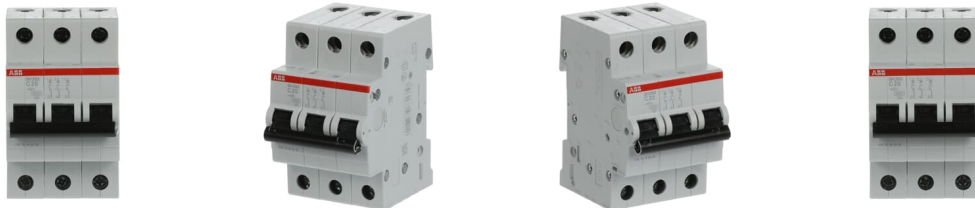
2CSC400030D0202

Classifications

ETIM 8	EC000042 - Miniature circuit breaker (MCB)
ETIM 9	EC000042 - Miniature circuit breaker (MCB)
WEEE Category	5. Small Equipment (No External Dimension More Than 50 cm)
WEEE B2C / B2B	Business To Business
CN8	8536 20 10
UNSPSC	39121603
eClass	V11.0 : 27141901
IDEA Granular Category Code (IGCC)	4897 >> Miniature circuit breakers
Object Classification Code	F

Categories

Low Voltage Products and Systems → Modular DIN Rail Products → Miniature Circuit Breakers MCBs → Miniature Circuit Breakers MCBs



360