



–Data Center Product Line –

KSTAR **Classic Tower & Convertible UPS Series**

-Online Rack-tower UPS-
UBR Series

1~3kVA 1:1phase PF:0.9



Features

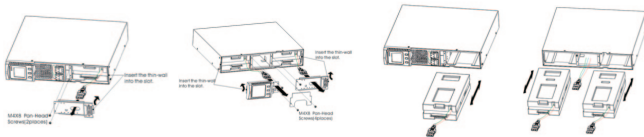
- True double-conversion
- Rack-mounted and floor-standing tower can be convertible
- Patented Mimic LCD of which content can be rotated according to the type of deployment
- Digital control guarantees high reliability
- Output receptacle control for non-critical load shedding capability
- ECO mode operation for energy saving
- Emergency power off function(EPO)
- Generator compatible
- Communications:RS-232,USB,SNMP card(Optional), Relay card (Optional)
- Bypass can be used when UPS is off(Setted in LCD)
- Cold start



Optional socket



Multifunctional bracket



Easy for maintenance, hot-swappable battery



SNMP



Mini dry contact card

Rear Panel



Rack-Tower convertible
 Two directions LCD display
 Battery pack (Optional)

Technical Specifications

MODEL	UBR10	UBR10-36	UBR10L	UBR10L-36	UBR15	UBR15L	UBR20	UBR20-72	UBR20L	UBR20L-72	UBR30	UBR30L
Capacity (VA/Watts)	1000VA/900W				1500VA/1350W		2000VA/1800W				3000VA/2700W	
INPUT												
Nominal Voltage	208/220/230/240Vac(L+N+PE)											
Operating Voltage Range	110~300Vac @(0~60%) Load;120~300Vac @(60~70%)Load,140~300Vac @(70~80%)Load;160~300Vac @(80~100%)Load											
Operating Frequency Range	50Hz: 45~55Hz, 60Hz: 55~65Hz Auto Sensing											
Power Factor	> 0.85@25%Load;>0.95 @50%Load;>0.97@75%Load;>0.99 @ Nominal voltage& 100%Load											
OUTPUT												
Output Voltage	208/220/230/240Vac:230Vac(Default)											
Power Factor	0.9											
Voltage Regulation	± 1%											
Frequency	Synchronized Range	45~55Hz ± 0.02Hz@ 50Hz, 55~65Hz ± 0.02Hz@60Hz										
	Battery Mode & None Synchronized Range	(50/60 ± 0.02)Hz										
Crest Factor	3:1											
Harmonic Distortion (THDv)	≤3% with linear load											
	≤5% with non-linear load											
Waveform	Pure Sinewave											
Transfer time	Utility to Battery : 0ms; Utility to Bypass: 4ms(Typical)											
EFFICIENCY												
AC Mode	88%				88%		89%				90%	
Battery Mode	84%	85%	84%	85%	85%	85%	86%	85%	86%	87%		
ECO Mode	94%											
BATTERY												
Battery Type	12V/9AH	12V/7AH	12V		12V/9AH	12V	12V/9AH	12V/7AH	12V		12V/9AH	12V
Numbers	2	3	2×N	3×N	3	3×N	4	6	4×N	6×N	6	6×N
Maximum Charging Current (A)	1.0	1.0	6.0/12.0		1.0	6.0/12.0	1.0	1.0	6.0/12.0		1.0	6.0/12.0
Charging Voltage(Vdc)	27.4 ± 1%	41.1 ± 1%	27.4 ± 1%	41.1 ± 1%	41.1 ± 1%		54.8 ± 1%	82.2 ± 1%	54.8 ± 1%	82.2 ± 1%	82.2 ± 1%	
Protect	Over-voltage(14.7v) / Low-voltage(10v)											
PROTECTION												
Overload Capacity	Line Mode	105~150%, 30s turn to bypass mode ; >150% 300ms turn to bypass mode										
	Battery Mode	105~150%, exceed 30s shutdown ; >150% exceed 300ms shutdown										
INDICATORS												
LED & LCD Display	Load/Battery/Input/Output/Operating Mode Information											
ALARM												
Battery Mode	Sounding every 4 seconds											
Battery Low	Sounding every second											
Overload	Sounding every 0.5 second											
Fault	Continuously Sounding											
MANAGEMENT												
Smart RS-232/USB(Preferential)	External Modbus card supported by RS232,Software supports Windows Family,Linus,FreeBSD											
Intelligent Slot	SNMP (Standard or mini) independent to RS-232(Optional)											
ENVIRONMENT												
Operating Temperature	0 ~ 40℃											
Humidity Range	0 ~ 95% (Non-condensing)											
Altitude	< 1500m,											
Noise Level	<50dB@ 1Meter											
PHYSICAL												
Dimension W × D × H (mm)	440 × 430 × 86.5						440 × 572 × 86.5	440 × 696 × 86.5	440 × 572 × 86.5		440 × 696 × 86.5	440 × 572 × 86.5
Net Weight (kg)	13.2	15.7	7.7	7.8	15.8	7.9	21.5	27.6	10.7	10.8	28.5	11.2
STANDARDS												
Safety	IEC/EN62040-1											
EMC	IEC/EN62040-2											

Specifications are subject to change without prior notice.

Battery Pack

EXBR+24V&+36V&+48V&+72V

Technical Specifications

MODEL	EXBR+24V	EXBR+36V	EXBR+48V	EXBR+72V
VOLTAGE	+24V	+36V	+48V	+72V
CHARGER INPUT				
Voltage Range	150~285Vac			
Frequency	50/60Hz			
Phase	Single phase with ground			
Current(A)	0.4	0.6	0.8	1.2
Protection	Resettable circuit breaker			
CHARGER OUTPUT				
Voltage (Vdc)	27.4±0.3	41.1±0.6	54.8±0.6	82.2±0.9
Current(A)	2A(Max)			
Protection	Fuse			
BATTERY				
Battery Type	12V 7AH/9AH; Sealed Valve Regulated Lead-Acid Battery (VRLA) ;Maintenance free			
Battery numbers per string	2	3	4	6
Battery string number	2			
Recharge time	8 hours to 90% capacity			
Protection	60A fast fuse			
Leakage current	<100uA			
PHYSICAL				
Dimension W × D × H (mm)	440 × 430 × 86.5		440 × 572 × 86.5	440 × 696 × 86.5
Net Weight (kg)	17.3	22.3	28.4	40.8
INDICATORS				
LED Panel	Charging LED, Battery testing LED			
ENVIRONMENT				
Operating Temperature	0 ~ 40°C			
Humidity Range	0 ~ 90% (Non-condensing)			
Noise Level	<40dB@ 1Meter			
STANDARDS				
Safety	IEC/EN62040-1			
EMC	IEC/EN62040-2			

Specifications are subject to change without prior notice.